

THE FIRST NOEL

for Handbells
with piano accompaniment

Arranged by

Matt Johnson

www.MattJohnsonMusic.com

DOLCE
& NUIT
PRODUCTIONS



COMPOSER'S NOTES

- *This arrangement features melodic handbells above a piano accompaniment...
...flowing with harmonic swirls around a repetitive rhythmic motif.*
- *There is a separate Handbell Part towards the back (if desired).*
- *Chord symbols are in the Handbell Part...which can double as a lead sheet for
other instrumentation as needed...be creative...;-)*
- *The engraving of this work was done by the composer.*

Namaste,

Matt Johnson

www.MattJohnsonMusic.com

Copyright © 1991 Dolce & Nuit Productions (ASCAP). Worldwide Rights Reserved.

THE FIRST NOEL

2 octaves (plus 2 bells)
Bells needed: 17



Traditional
arr. by MATT JOHNSON (ASCAP)
www.MattJohnsonMusic.com

Slow 4, with motion

Copyright © 1991 by Dolce & Nait Productions (ASCAP)
Worldwide Rights Reserved.

Musical notation for measures 7 and 8. The system includes a vocal line and a piano accompaniment. The piano part features a bass line with a 'Ped.' marking and sixteenth-note patterns, and a treble line with chords and sixteenth-note accompaniment. Chords are labeled as Em and D. Measure numbers 7, 8, and 3 are indicated above the vocal line.

Musical notation for measures 9 and 10. The system includes a vocal line and a piano accompaniment. The piano part features a bass line with a 'Ped.' marking and sixteenth-note patterns, and a treble line with chords and sixteenth-note accompaniment. Chords are labeled as C and Bm7. Measure numbers 9, 10, and 3 are indicated above the vocal line.

Musical notation for measures 11 and 12. The system includes a vocal line and a piano accompaniment. The piano part features a bass line with a 'Ped.' marking and sixteenth-note patterns, and a treble line with chords and sixteenth-note accompaniment. Chords are labeled as Am, Dsus4, and D. A 'cresc.' marking is present in the piano part. Measure numbers 11, 12, and 3 are indicated above the vocal line.

Musical notation for measures 13 and 14. The system includes a vocal line and a piano accompaniment. The piano part features a bass line with a 'Ped.' marking and sixteenth-note patterns, and a treble line with chords and sixteenth-note accompaniment. Chords are labeled as G and Em. A 'mp' marking is present in the piano part. Measure numbers 13, 14, and 6 are indicated above the vocal line.

15 16

G Em

mp

decresc.

6 6 6 6 6 6 6 6

17 18

G D/F#

p

6 6 6 6 6 6 6 6

19 20

Em D

6 6 6 6 6 6 6 6

21 22

C Bm7

6 6 6 6 6 6 6 6

23 24 3 3

Am 6 Dsus4 D#°7

25 26 3 3

Em 6 D 6

27 28 3 6 Bm7 6

29 30 6 6 Bm7 6

31 32

C D 6 G 6

cresc. *mp*

Red. 6 6 6 6 *Red.* 6 6 6 6

33 34

Em G 6 6

Red. 6 6 6 6 *Red.* 6 6 6 6

35 36

Em G 6 6

mf *p*

Red. 6 6 6 6 *Red.* 6 6 6 6

37 38

D/F# Em 3 6 3 6

Red. 6 6 6 6 *Red.* 6 6 6 6

39 40

D C

3 6 3 6

Red. 6 6 6 6 Red. 6 6 6 6

41 42

Bm7 F

6 6

Red. 6 6 6 6 Red. 6 6 6 6

43 44

Dsus4 D G

cresc. mp

6 6 2 1 6 6

Red. 6 6 Red. 6 6 Red. 6 6 6

45 46

Em G

6 6

Red. 6 6 6 6 Red. 6 6 6 6

47 3 48 3

Em *mf* G

decresc. *p*

Red. 6

49 3 50 3

D/F# Em

Red. 6

51 3 52 3

D C

Red. 6

53 3 54 3

Bm7 F

Red. 6

55 56

Dsus4 D#7 Em

57 58

D C

59 60

Bm7 Am

61 62

Bm7 C

Red. 6

63 *cresc.* *f* 3 6 3

Dsus4 D#°7 Em 6 6

65 66 3 6 6

D C 6 6

67 68 B Am 6 6

69 70 Bm7 C 6 6

decresc. *decresc.*

71 3 72

Dsus4 D G

mp *p*

Red. 6

73 74

Em G

p

Red. 6

75 76

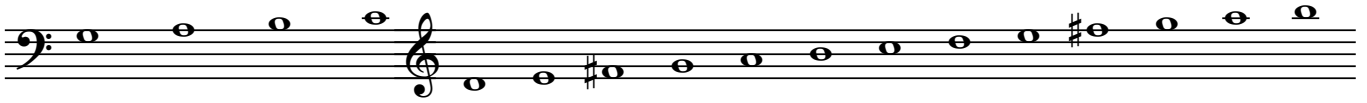
Em G

p

Red. 6

THE FIRST NOEL

2 octaves (plus 2 bells)
Bells needed: 17



HANDBELL PART / Lead Sheet

Traditional
arr. by MATT JOHNSON (ASCAP)
www.MattJohnsonMusic.com

Slow 4, with motion



Chord progressions: G, Em, G, Em, G, D/F#, Em, D, C, Bm7, Am, Dsus4, D, G, Em, G, Em, G, D/F#, Em, D, C, Bm7.

Copyright © 1991 by Dolce & Nuit Productions (ASCAP)

Am 23 3 Dsus4 D#°7 24 3 Em 25 3

D 26 3 C 27 3 Bm7 28 Am 29

Bm7 30 C 31 D 32 G Em 33 G 34

Em 35 3 G 36 3 D/F# 37 3

mf

Em 38 3 D 39 3 C 40 3 Bm7 41 3

F 42 3 Dsus4 43 D 44 G 45 Em 46 G

Em 47 3 G 48 3 D/F# 49 3 Em 50 3

mf

51 **D** 52 **C** 53 **Bm7** 54 **F**

55 **Dsus4** **D#°7** 56 **Em** 57 **D**

58 **C** 59 **Bm7** 60 **Am** 61 **Bm7** 62 **C**

63 **Dsus4** **D#°7** 64 **Em** 65 **D**

cresc. **f**

66 **C** 67 **B** 68 **Am** 69 **Bm7** 70 **C**

decresc.

71 **Dsus4** **D** 72 **G** 73 **Em** 74 **G** 75 **Em** 76 **G**

mp